

AMD Direct

VENT HOOD (FOR OUTDOOR USE ONLY)

MODELS: VH36-2/VH42-2/VH48-2/VH60-2

INSTALLATION INSTRUCTIONS



IMPORTANT: READ THESE INSTRUCTIONS BEFORE STARTING INSTALLATION OR USE.



WARNING

- AMD Vent Hoods are for residential use only!
- For general ventilation use only. Do not use to exhaust hazardous or explosive materials or vapors
- Use this unit only in the manner intended by the manufacturer.
- Before servicing or cleaning this unit, switch power off at service panel and lock the panel to prevent power from being switched on by accident. If the service panel cannot be locked, securely fasten a prominent warning device, such as a tag, to the service panel.



WARNING

TO REDUCE THE RISK OF GRILL TOP GREASE FIRE, PLEASE OBSERVE THE FOLLOWING:

1. Never leave surface units unattended at high settings.
2. Oil-overs can cause smoking and may ignite. Heat oils slowly on low heat.
3. Always turn hood ON five minutes prior to cooking to begin airflow.
4. Clean ventilation filters frequently. **DO NOT ALLOW GREASE TO ACCUMULATE ON FAN OR FILTER.**
5. Use proper pan size. Always use cookware appropriate for the size of the burner or element.

NOTE TO THE INSTALLER

To avoid damage that will not be covered under warranty make sure blowers are free from obstructions (packing and debris) prior to running the blowers. Test run blowers before finalizing installation. Check with manufacturer before attempting to use blower systems other than AMD blower systems.



WARNING



IN THE EVENT OF GRILL TOP GREASE FIRE, OBSERVE THE FOLLOWING:

1. Smother the flames with a close-fitting lid, cooking sheet or other metal tray, and then turn off the burner. **BE CAREFUL TO PREVENT BURNS.** If the flames do not go out immediately, **EVACUATE AND CALL THE FIRE DEPARTMENT.**
2. **NEVER PICK UP A FLAMING PAN.**
3. **MAKE SURE YOUR VENTILATION SYSTEM IS COMPLETELY TURNED OFF. DO NOT TURN HOOD ON TO TRY AND EVACUATE SMOKE.**
4. **DO NOT USE WATER**, including wet dish cloths or towels - a violent steam explosion may result.

USE AN EXTINGUISHER ONLY IF:

- You know you have a class ABC extinguisher and you already know how to operate it.
- The fire is small and contained in the area where it started.
- The fire department is being called.

HANDLING PRECAUTIONS

- Remove all rings, watches, belt buckles, jewelry and any clothing with metal buttons or snaps to prevent damage to hood.
- **DO NOT REMOVE HOOD FROM ITS ORIGINAL CARTON UNTIL YOU ARE READY TO INSTALL IT.**
- When you are ready to begin the installation process, remove the hood from its carton and place it on a clean soft blanket.
- Inspect the hood carefully for any damage or imperfections before you begin to install the hood. If any damage or imperfections exist, re-carton the hood and call your dealer **IMMEDIATELY.** Do not install a damaged hood.
- It is highly recommended that rubber gloves be used to prevent scratches on the hood and to provide you with a firm grip.
- When removing the hood from the carton, locate the filters. The filters are not pre-installed in the hood. The filters are in a box marked filters inside the hood carton.
- AMD model hood series can be ducted to the top or the rear. Check product guide for additional transitions, wall caps and roof caps.
- All AMD ventilation hoods have a variable speed control blower switch

TABLE OF CONTENTS

Pre-Installation & Safety Information	3
Vent Hood Specifications and Dimensions	4-5
Electrical / Specifications / Tool Requirements.....	6
Replacement Parts List.....	7
Replacement Parts.....	8
Locating Vent Hood.....	9
Vent Hood Installation.....	10-11
Electrical Connection.....	12
Grease Tube & Baffle Installation.....	13
Operation	14
Notes.....	15
Cleaning and Maintenance	16
Troubleshooting.....	17
Warranty.....	17

IMPORTANT PRE-INSTALLATION AND SAFETY INFORMATION

1. Read all instructions.
2. **THIS VENT HOOD IS FOR OUTDOOR, WALL MOUNT INSTALLATION ONLY.** Outdoor is defined as an area that has unconfined air, open to the elements at all times. A wall is defined as a side of a building connecting floor and roof.
3. Dampers are not allowed for outdoor applications in this vent hood.
4. Installation, service, and repair must be done by a qualified professional service technician.
5. This vent hood is for use with a gas grill only. It is not recommended for use with a charcoal grill (due to higher heat output that may cause damage to the vent hood).
6. The vent hood and the gas grill are not intended to be installed in or on boats or recreational vehicles.
7. To protect against electric shock, do not immerse cord or plugs in water or other liquid.
8. Unplug from the outlet when not in use and before cleaning. Allow to cool before putting on or taking off parts.
9. Do not operate any appliance with a damaged cord, plug, or after the appliance malfunctions or has been damaged in any manner. Contact the manufacturer for repair.
10. Do not let the cord touch hot surfaces.
11. Do not use an outdoor appliance for purposes other than intended.
12. When connecting, first connect plug to the outdoor appliance, then plug appliance into the outlet.
13. This appliance must be grounded. In the event of an electrical short circuit, grounding reduces the risk of electric shock by providing an escape wire for the electric current. This appliance is equipped with a cord having a grounded wire with a grounding plug. The plug must be plugged into an outlet that is properly installed and grounded.
14. **Use only a properly wired and inspected 120VAC (15 AMP minimum) Ground Fault Circuit Interrupter (GFCI) GROUNDED 3-wire receptacle (not included) with this outdoor appliance.**
15. Never remove the grounding plug or use with an adapter with 2 prongs.
16. Do not use an extension cord. If the power cord is too short, have a qualified electrician install an outlet near the appliance.
17. When cutting or drilling into a wall or roof, do not damage electrical wiring and other hidden utilities.
18. Ducted fans must always be vented to the outdoors.
19. **WARNING:** To reduce the risk of fire, use only metal ductwork.
20. **DO NOT USE 90° ELBOWS FOR THIS INSTALLATION. DO NOT USE A RESTRICTIVE TERMINATION CAP FOR THIS INSTALLATION. VENT PIPING SHOULD BE INSTALLED AS STRAIGHT AS POSSIBLE TO PREVENT BACK-PRESSURE ON THE FANS. REFERENCE THE VENT PIPING SECTION OF THIS MANUAL FOR DETAILS.**

SAVE THESE INSTRUCTIONS

SPECIFICATIONS AND DIMENSIONS

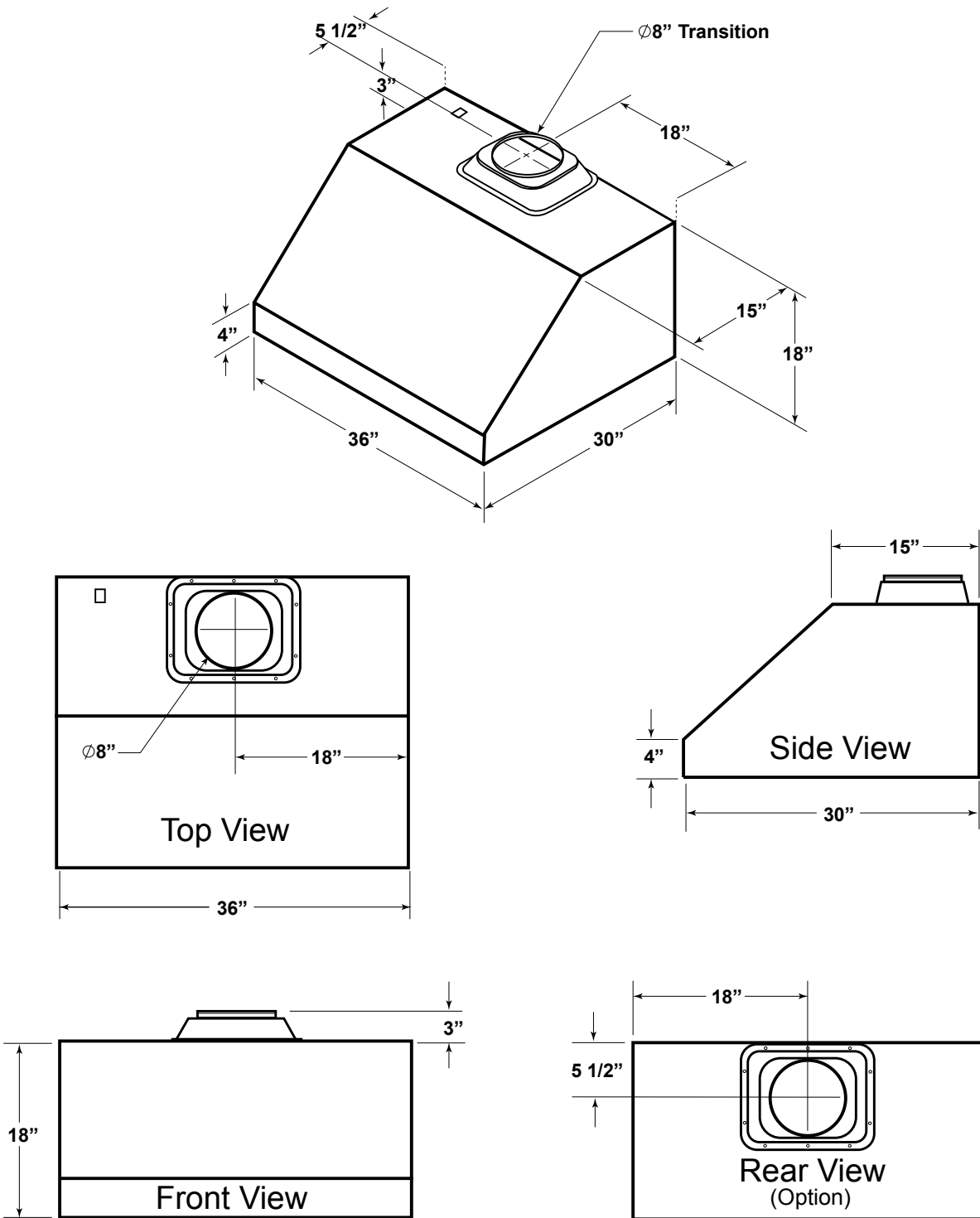
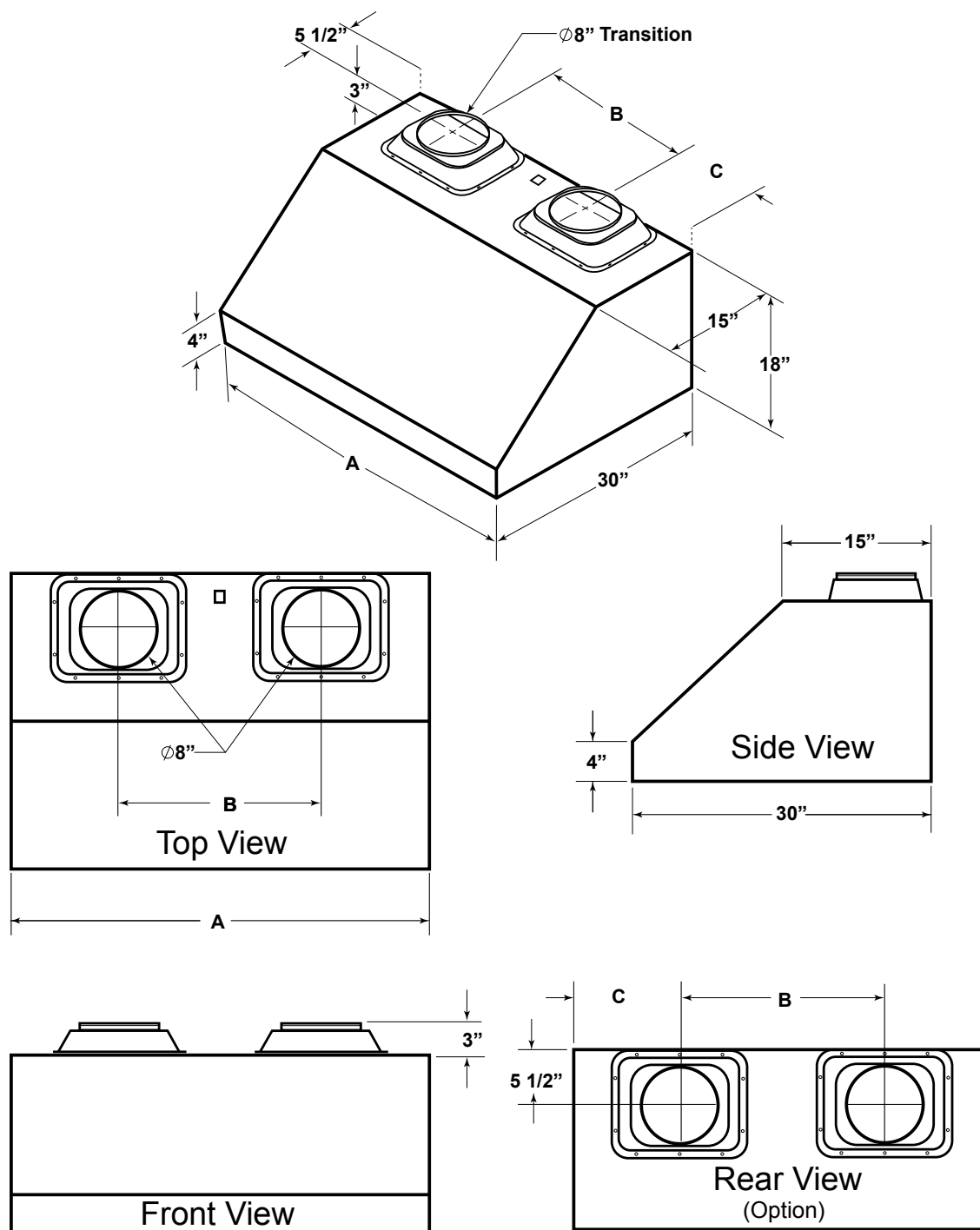


Fig. 1 VH36-2 Vent hood dimensions

VENT HOOD DIMENSIONS			
Model #	A	B	C
VH36-2	36"	30"	18"

SPECIFICATIONS AND DIMENSIONS



VENT HOOD DIMENSIONS			
Model #	A	B	C
VH42-2	42"	20 3/8"	10 3/16"
VH48-2	48"	24 1/2"	11 3/4"
VH60-2	60"	30 1/4"	14 7/8"

Table 1

ELECTRICAL SAFETY

- To prevent against electric shock, do not immerse cord or plugs in water or other liquid.
- Unplug from the outlet when not in use and before cleaning. Allow to cool before putting on or taking off parts.
- Do not operate any outdoor appliance with a damaged cord, plug, or after the appliance malfunctions or has been damaged in any manner. Contact the manufacturer for repair.
- Do not let the cord touch hot surfaces.
- Do not use the outdoor appliance for purposes other than intended.
- When connecting, first make wire connections then plug the appliance into the outlet.
- **Use only a properly wired and inspected 120VAC (15 AMP minimum) GFCI GROUNDED 3-wire receptacle with this outdoor appliance.**
- Never remove the grounding plug or use with an adapter with 2 prongs.
- **The provisions of the National Electric Code as well as any local codes must be observed when installing the product.**

SPECIFICATIONS

Voltage:	120V / 60hz
Power:	36" Model 246 W 42"/48"/60" Models 489 W
Amperage:	36" Model: 2A 42"/48"/60" Models: 4A
Motor Rotational Speed:	980 rpm (top speed)
Maximum Air Flow:	1000 cfm for 36" model 2000 cfm for 42/48/60" models
Fan Type:	Centrifugal
Noise Level:	58dB (single motor) - 62dB (dual motor)
LED:	3 W
Venting:	Top Vent or Rear Vent
Venting Size:	8-inch Diameter
# of Vents:	1 (for 36" model) 2 (for 42"/48"/60")

Table 3

TOOLS REQUIRED

The following are minimum tools required for the installation of the vent hood components. Additional tools may be required for your individual installation.

2 Installers recommended
Proper personal safety equipment
Appropriate tools for electrical install
Power drill
Drill bit - Phillips head
Medium Phillips screwdriver

3/8" Nut driver
1/4" Nut driver
Measuring tape
Level
Duct tape
100% Silicone sealant

REPLACEMENT PARTS LIST

ITEM #	ITEM	VH36-2		VH42-2		VH48-2		VH60-2	
		QTY	AMD	QTY	AMD	QTY	AMD	QTY	AMD
1	1/2" DUCT COVER FILLER	2	DCF-SPT	2	DCF-SPT	2	DCF-SPT	2	DCF-SPT
2	4" DUCT COVER FILLER	2	DCF-SP4	2	DCF-SP4	2	DCF-SP4	2	DCF-SP4
*2a	8" DUCT COVER FILLER	2	DCF-SP8	2	DCF-SP8	2	DCF-SP8	2	DCF-SP8
3	DUCT COVER (optional)	1	VH36-2-DC	1	VH42-2-DC	1	VH48-2-DC	1	VH60-2-DC
4	10" TRANSITION COLLAR for VH42-2 (optional)	-	-	1	VH42-2-WDF	-	-	-	-
*4a	10" TRANSITION COLLAR for VH48-2 (optional)	-	-	-	-	1	VH48-2-WDF	-	-
*4b	10" TRANSITION COLLAR for VH60-2 (optional)	-	-	-	-	-	-	1	VH60-2-WDF
5	TRANSITION COLLAR FOR 8" VENT	1	11397	2	11397	2	11397	2	11397
6	VENT HOOD ASSEMBLY	1	11383	1	11384	1	11385	1	11386
7	4" VENT HOOD SPACER (optional)	1	VH36-2-SP4	1	VH42-2-SP4	1	VH48-2-SP4	1	VH60-2-SP4
*7a	8" VENT HOOD SPACER (optional)	1	VH36-2-SP8	1	VH42-2-SP8	1	VH48-2-SP8	1	VH60-2-SP8
8	1/2" MOUNTING TEMPLATE	1	VH36-2-SPT	1	VH42-2-SPT	1	VH48-2-SPT	1	VH60-2-SPT
9	BLOWER PLATE	1	11398	2	11398	2	11398	2	11398
10	1000 CFM BLOWER	1	11290	2	11290	2	11290	2	11290
11	LED LIGHT	2	11388	4	11388	4	11388	4	11388
12	KNOB	2	11344	3	11344	3	11344	3	11344
13	LIGHT CONTROLLER	1	11387	1	11387	1	11387	1	11387
14	FAN CONTROLLER	1	11343	2	11343	2	11343	2	11343
15	BAFFLE FILTER - 12"	3	11389	3	11389	4	11389	5	11389
*15a	BAFFLE FILTER - 6"	-	-	1	11399	-	-	-	-
16	GREASE TUBE	1	11393	1	11394	1	11395	1	11396
17	POWER CORD	1	11517	1	11517	1	11517	1	11517
*18	CAPACITOR	1	11342	1	11342	1	11342	1	11342

* NOT SHOWN

Table 4

REPLACEMENT PARTS

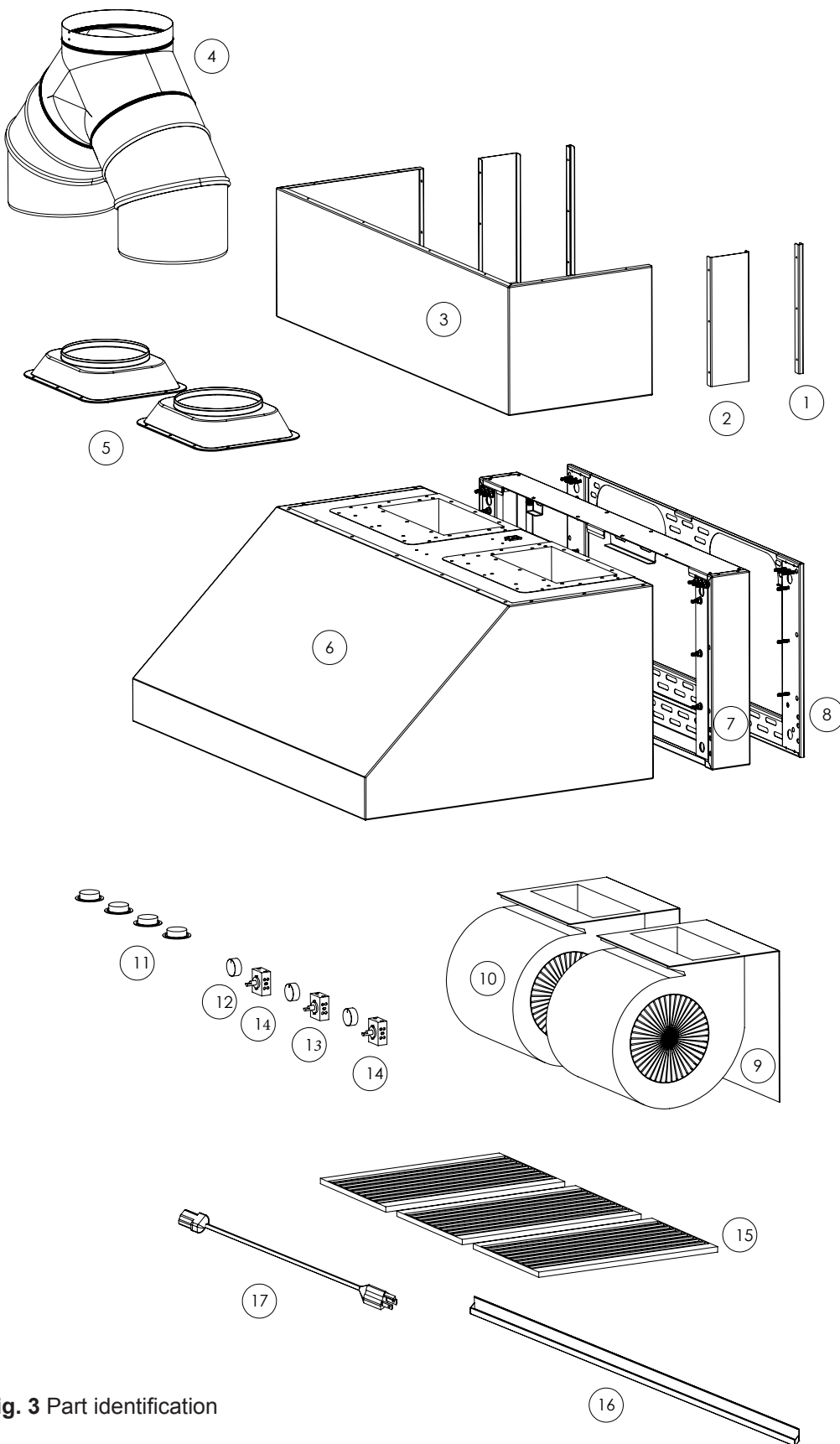


Fig. 3 Part identification

LOCATING HOOD

- **THIS VENT HOOD IS FOR OUTDOOR, WALL MOUNT INSTALLATION ONLY**
- Installation must be done by a qualified professional service technician.
- Below is a diagram of a generic installation.
- Please review and understand this section prior to proceeding with installation.

PLANNING THE LOCATION FOR YOUR VENT HOOD

Select the proper height to mount the hood. Take into consideration the stature of the person or persons who will be cooking. If mounted at a height greater than 32" above the cooking surface, the hood should be at least 6" wider (minimum 3" each side) than the cooking appliance to provide a proper capture of heat and grease (Refer to the range manufacturer's guidelines). See figures 4 and 5.

Once the proper height is established, draw a level line where the bottom of the hood will rest. If practical, mount a board equal to the width of the hood along the line so you may rest the hood on it while installing. Mark a centerline on the wall equal to the entire height of the hood to assist with the proper duct alignment and hood placement. Determine stud location and mark it clearly. If only one stud can be located, toggle bolts or additional fastening must be installed to firmly secure the hood to the wall.

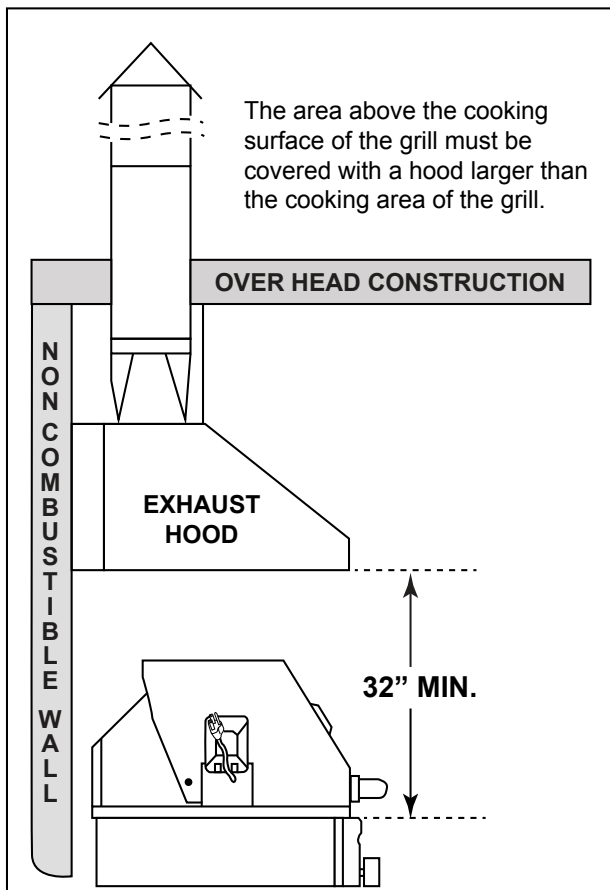
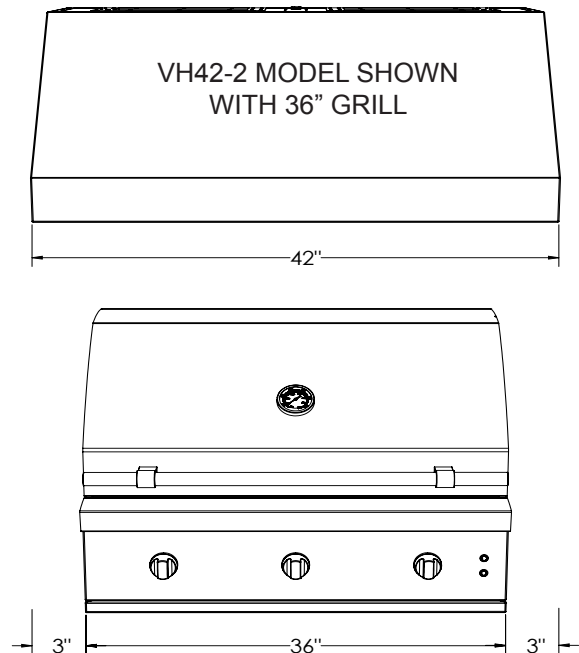


Fig. 4 Hood clearance specifications



VENT HOOD SIZE GUIDE

Grill Size	Hood Size
30"	36"
32"-36"	42"
38"-42"	48"
44"-54"	60"

Fig. 5 Hood size guide.

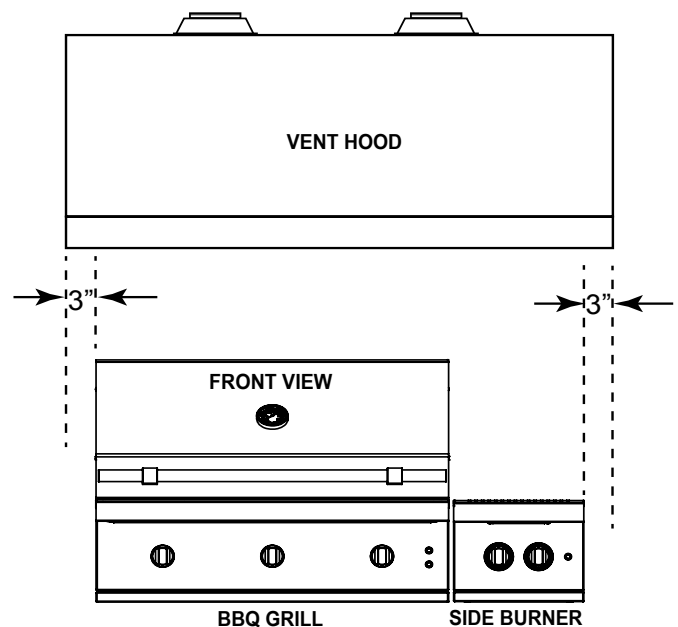


Fig. 6 Shows 3" minimum clearance covering appliance.

INSTALLATION

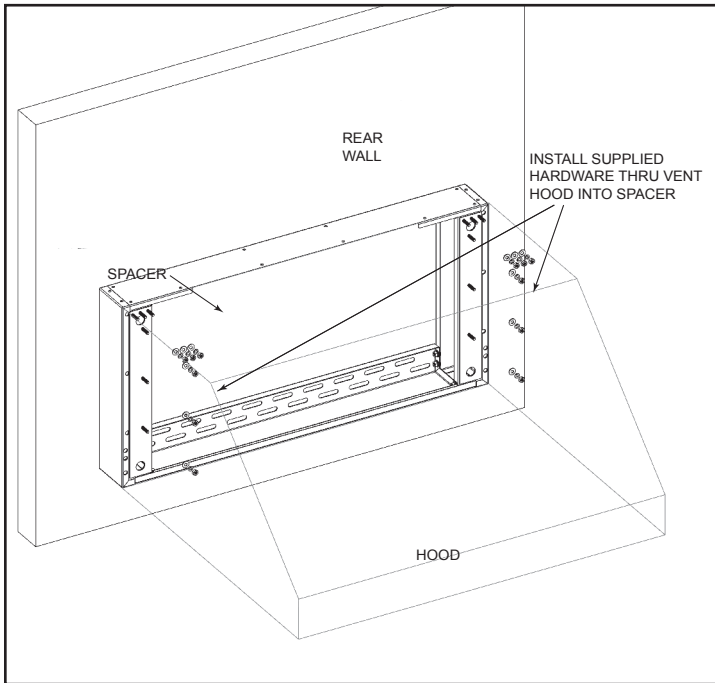


Fig. 7 Vent hood installation

CONVERTING BLOWER MOTOR TO REAR VENTING

Vent hoods shipped directly from AMD Direct will have the blower motors positioned to run vertically [top venting]. To convert blower motor to run horizontally [rear venting], follow these steps:

1. Detach blower motor housing by removing the 18 mounting screws that hold the blower motor to the vent hood body.
2. Pull the blower motor housing out of the vent hood body and rest it on the floor.
3. Rotate the blower motor to 180° (blower discharge position should be facing horizontally) and secure all connecting wire cables below the blower motor.
4. Place the blower motor back into the vent hood body.
5. Attached all mounting screws back in place.

WALL MOUNT SPACERS

Vent hood is shipped with the ½" mounting template included. The wall mounting template must be secured into multiple wall studs using proper hardware to ensure sufficient load support. Installation must be done by a qualified professional installer.

The ½" mounting template may be replaced with a 4" or 8" spacer. These spacers allow the vent hood to be extended by either 4 or 8 inches from the wall.

NOTE: ½" template, 4" spacer and 8" spacer cannot be installed together.

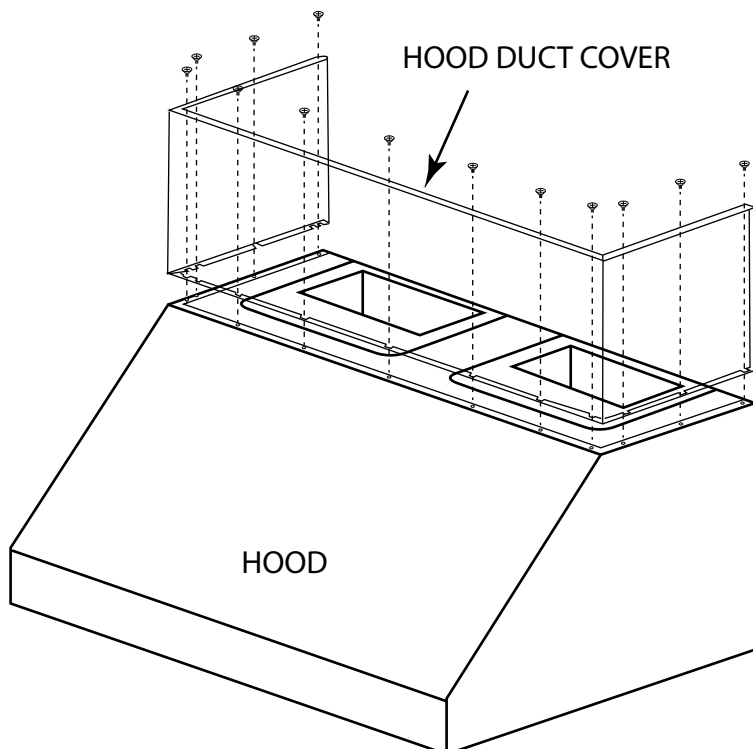


Fig. 8 Duct cover installation

Read and follow all instructions. The vent hood duct covers are packaged and ready to be installed.

Carefully slide the duct cover into the area above the already secured vent hood. Ensure the bottom perimeter of the duct cover rests flush with the vent hood.

From the top of the hood, use a medium size Phillips screwdriver and the M5 18-8 screws and washers supplied with the duct cover to secure with the hood. Screws and washers are to be fastened through the vent hood's threaded nutserts.

INSTALLATION

VENT PIPING

1. A cutout will need to be made through the roof to route the piping through; and must be sealed with silicone to prevent leaks.

Install 10" round (or 8" round for VH36-2) galvanized rigid (single wall) vent piping from the transition on, as required. All joints must be sealed using duct tape.

IMPORTANT: Vent piping must be installed as straight as possible to prevent back pressure on the blowers.

IMPORTANT: If an off set is required for your installation, a maximum of two 45° elbows may be used. **Do not use 90° elbows for this installation.** See Fig. 9.

1. Using duct tape and the appropriate hardware; install the termination cap on the top of the vent piping to prevent water and debris from entering the vent hood.

IMPORTANT: A non-restrictive termination cap must be used. Do not use a restrictive cap or damper for this installation.

Installation will depend on roof construction and individual setup.

NOTE: Exceeding a 20-foot total vent pipe length will reduce the effectiveness of the exhaust system.

WYE DUCT FITTING

Optional wye duct fitting adapts the two 8" vent hood duct openings into a single 10" duct.

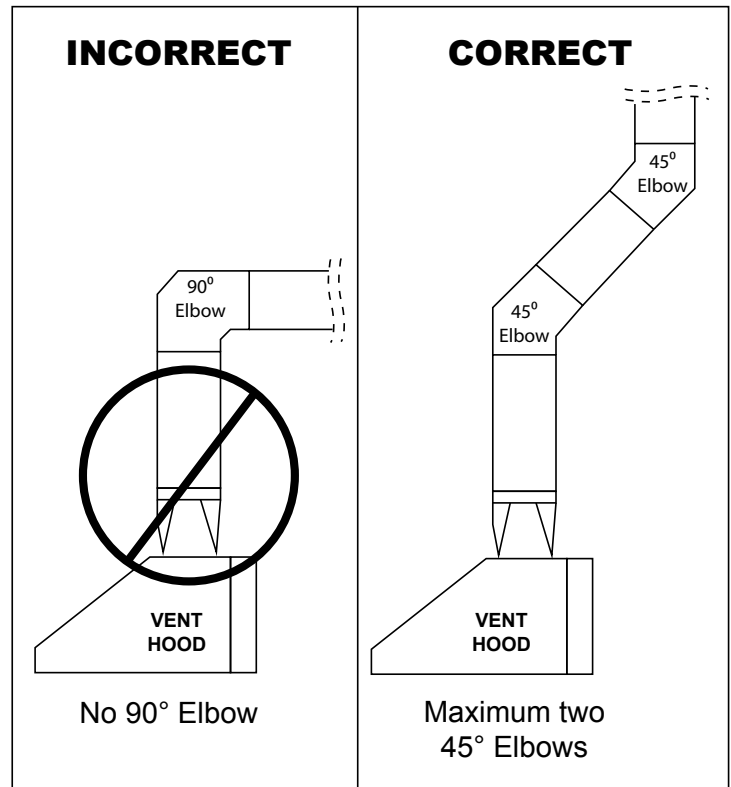


Fig. 9 Proper venting

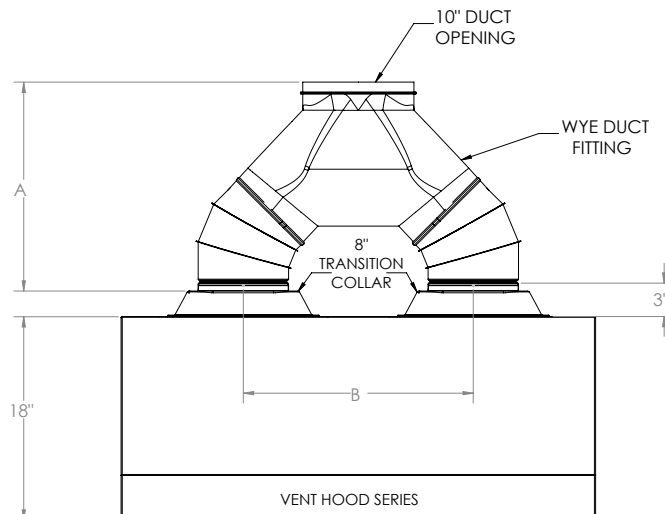


Fig. 10 Specifications.

MODEL:	A	B
VH42-2-WDF	18 1/2"	20 3/8"
VH48-2-WDF	21 3/4"	24 1/2"
VH60-2-WDF	24"	30 1/4"

ELECTRICAL

A 120VAC (15 AMP minimum) GFCI GROUNDED 3-wire receptacle (not included) is required within the vicinity of the vent hood to provide power to the unit. The area above the vent hood that the soffit / duct cover will enclose is an ideal location (See Fig. 10). Your individual installation may vary.

Wire the receptacle above the center top of the unit.

Note: Observe the National Electric Code and all local codes and verify polarity of the receptacle.

Connect the power cord coming from the top of the vent hood to the previously wired 120VAC (15 AMP minimum) GFCI GROUNDED 3-wire receptacle. See Fig.10.

Note: The power cord must be plugged in when operating the vent hood.

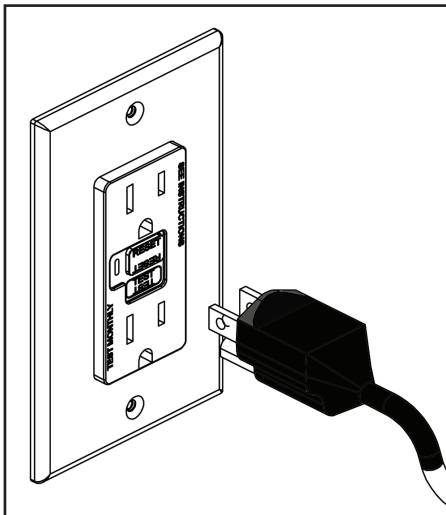


WARNING



Electrical Grounding Instructions

This appliance is equipped with a three-prong (grounding) plug for your protection against shock hazard and should be plugged directly into a properly grounded three-prong receptacle. Do not cut or remove the grounding prong from this plug.



Detail close up of 120VAC grounded 3-wire receptacle (not included)

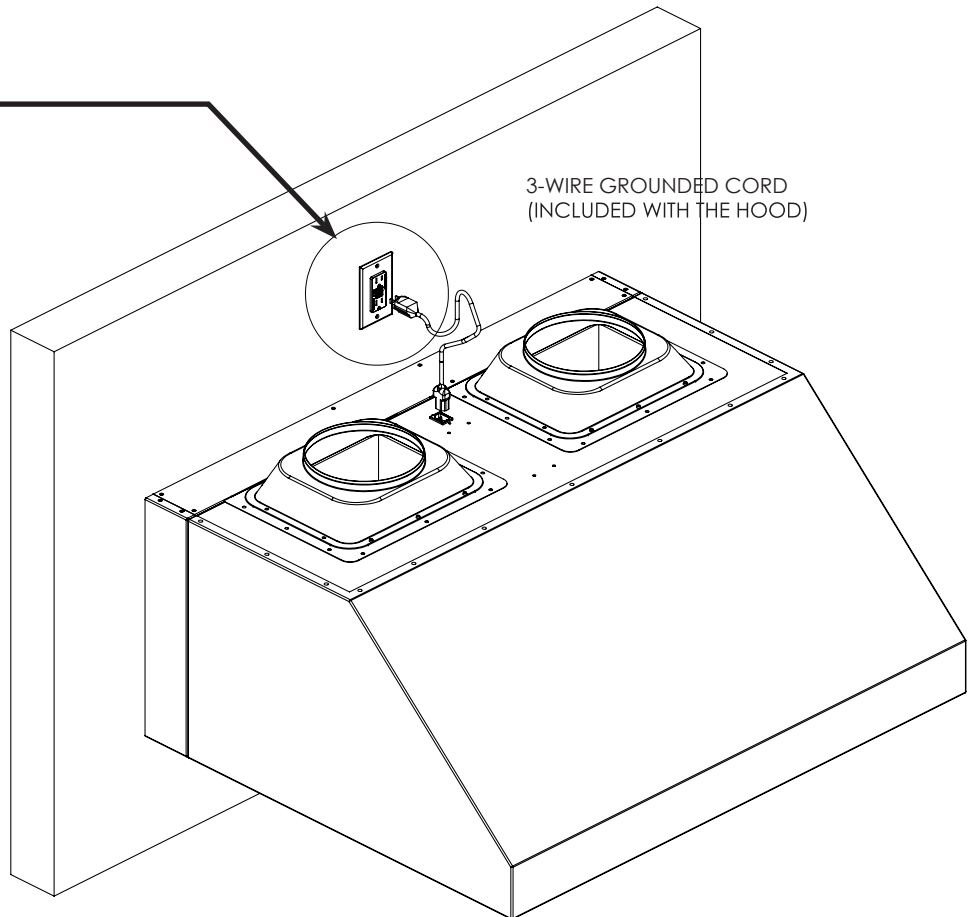
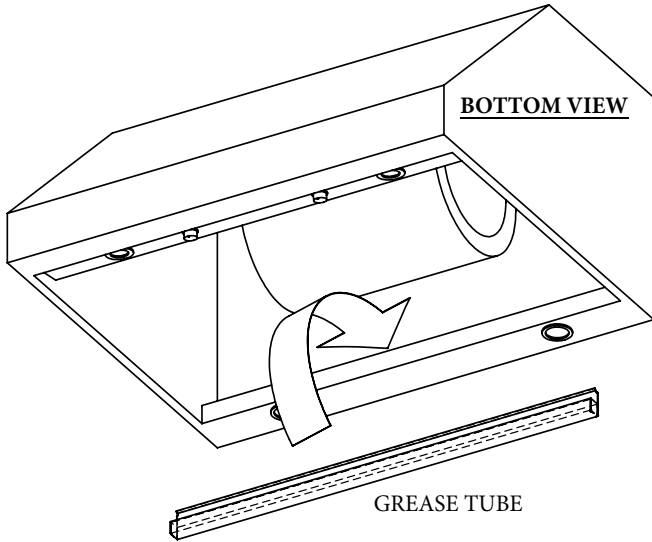
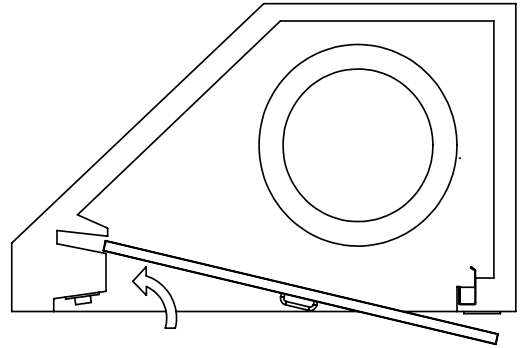
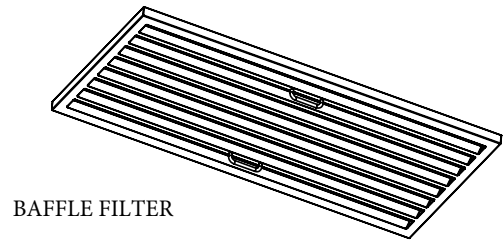
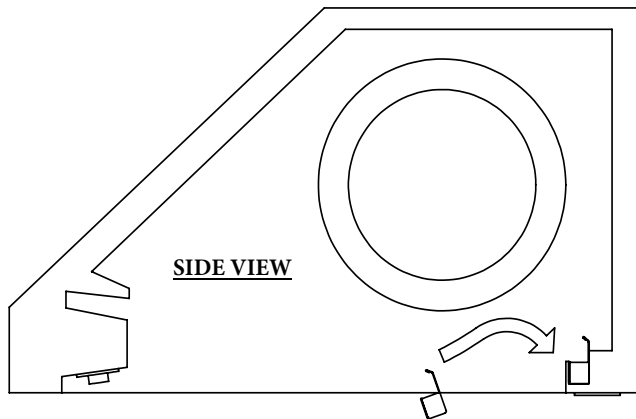


Fig. 11 Electrical location

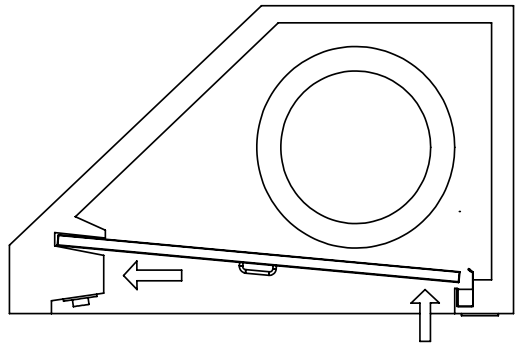
GREASE TUBE & BAFFLE FILTER INSTALLATION



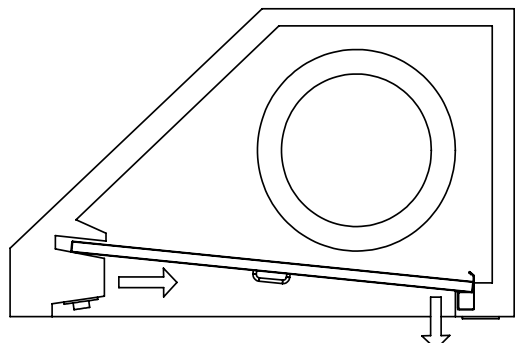
Place grease tube into the hood opening and insert into slot as shown



Angle filter toward the front of hood opening above the LED light and control panel



Slide filter toward and into the recess behind the front of the hood while raising the filter at the rear



Lower filter while sliding back until it rests onto the grease tube

OPERATION

CONTROL PANEL

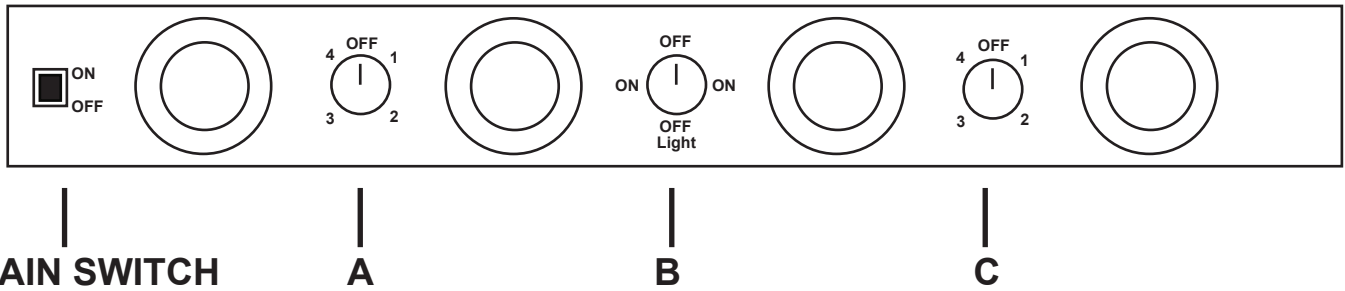


Fig. 12 Control panel functions.

A - Left Blower Knob

B - LED Lights Knob

C - Right Blower Knob

Blower Speed Adjustment: Each blower motor has 4 speed settings. From OFF position (0 position), turning the blower knob clockwise will start the motor in the lowest speed setting (1 position). Continuing to turn the knob clockwise will allow the motor to advance to the highest setting. Turning the motor counterclockwise will allow the motor to return to the original position and stop the motor.

LED Lights: The lights only have one setting. From the OFF position, turning the LED knob clockwise will turn ON the lights. Turning the knob once more will turn OFF the lights.

Main Switch: Main power switch will turn ON or OFF the main power for both blower motors.

NOTE: Vent hood model VH36-s has one blower and two LED lights.

NOTES

Use this page to record any information may need at a later time.

CLEANING AND MAINTENANCE

Read and understand all instructions and warnings in this manual before operating the appliance. Save these instructions for future reference.

Always leave safety grills and filters in place. Without these components, operating blowers could catch on to hair, fingers and loose clothing.

NEVER dispose cigarette ashes, ignitable substances, or any foreign objects into blowers.

NEVER leave cooking unattended. When frying, oil in the pan can easily overheat and catch fire. The risk of self-combustion is higher when the oil has been used several times.

NEVER cook on "open" flames under the vent hood. Check deep fryers during use: Superheated oil may be flammable.

The saturation of greasy residue in the blower and filters may cause increased inflammability. Always keep hood clean and free of grease and residue build-up to prevent possible fires.

Filters must be cleaned periodically and free from accumulation of cooking residue. Old and worn filters must be replaced immediately.

DO NOT operate blowers when filters are removed. Never disassemble parts to clean without proper instructions. Disassembly is recommended to be performed by qualified personnel only. Read and understand all instructions and warnings in this manual before proceeding.

SAFETY WARNING: Never put your hand into area housing the fan while the fan is operating!

For optimal operation, clean vent hood, grease tube and all baffle filters regularly. Regular care will help preserve the appearance of the range hood.

Cleaning exterior surfaces:

Clean periodically with stainless steel cleaner and clean cotton cloth. Do not use corrosive or abrasive detergent or steel wool/scoring pads which will scratch and damage the stainless steel surface. For heavier oil use liquid degreaser.

Avoid getting cleaning solution onto or into the control panel. Follow directions of the stainless steel cleaner.

CAUTION: Do not leave on too long as this may cause damage to the hood finish. Use a soft towel to wipe off the cleaning solution, gently rub off any stubborn spots. Use a dry soft towel to dry the hood.

After cleaning, you may use nonabrasive stainless steel polish to buff out the stainless luster and grain. Always scrub lightly with clean cotton cloth, and with the grain.

DO NOT allow deposits to accumulate or remain on the hood.

DO NOT use ordinary steel wool or steel brushes. Small bits of steel may adhere to the surface and cause rusting.

DO NOT allow salt solutions, disinfectants, bleach, or cleaning compounds to remain in contact with stainless steel for extended periods. Many of these compounds contain chemicals, which may be harmful. Rinse with water after exposure and wipe dry with a clean cloth.

Cleaning baffle filters:

IMPORTANT: Drain oil from grease tube and filters before oil and residue overflow!

The stainless steel filters are intended to filter out residue and grease from cooking. It need not be replaced on a regular basis but are required to be kept clean.

Filters should be cleaned after every 30 hours of use.

Stainless steel filters are dishwasher safe. Spray degreasing detergent and leave to soak if very dirty. Dry the filters and re-install before using the hood.

TROUBLESHOOTING

If you have trouble with this vent hood, please use this list to identify the problem. By trying one or more of the solutions to the possible cause, you should be able to solve the problem. If this list does not cover your present problem, or if you have other technical difficulties with the vent hood, please contact AMD Direct or visit our web site at www.amddirect.com.

PROBLEM	POSSIBLE CAUSE	CORRECTION
Unit does not turn ON	1. No power to hood 2. Switch malfunction	1a Check if unit is plugged in. 1b Check if GFCI receptacle is tripped. 2. Check or replace switch.
Loss of Suction	1. Grease filter(s) clogged 2. Fan(s) not operating 3. Fan(s) obstructed 4. Vent restriction	1. Clean or replace filter(s). 2. Check or replace fan(s). 3. Check fan(s) for possible obstructions. 4. Check vent for proper design or obstructions.
Switch Malfunction	1. Defective switch 2. Wire harness shorted or disconnected	1. Check or replace switch. 2. Check wire harness connection.
Fan Malfunction	1. Defective fan 2. Wire harness shorted or disconnected 3. Fan(s) obstructed 4. Defective switch 5. Vent restriction	1. Check or replace fan. 2. Check wire harness connection. 3. Check fan(s) for possible obstructions. 4. Check or replace switch. 5. Check vent for proper design or obstructions.
Lights do not turn ON	1. Bulb burned out 2. Defective switch	1. Replace bulb. 2. Check or replace switch.

WARRANTY



Product Registration and Warranty Claim

AMD DIRECT, INC
 14520 DELTA LANE SUITE 105
 HUNTINGTON BEACH, CA 92647